

# CATALOGUE VIDÉO SURVEILLANCE



Standard : +226 25652835  
GSM: +22670245169  
WhatsApp +22678885761

[contact@elecprotech.com](mailto:contact@elecprotech.com)  
[elecprotech@gmail.com](mailto:elecprotech@gmail.com)  
[www.elecprotech.com](http://www.elecprotech.com)

**ZKT** *ECO*

# CCTV PRODUCTS SELECTION GUIDE

Q3, 2021



Recorder



Camera



APP



Software

## Lite Series IP Camera (2MP/5MP)

### ES-852021/22B-S5

- 1/2.9" CMOS
- 2MP (1920\*1080)@25fps
- H.264/H.265
- Face detection
- IR Range 30m
- Fixed Lens 2.8mm/3.6mm
- DWDR, 3D DNR, BLC, ROI
- PoE, metal+plastic, IP67



### BS-852022/23B-S5

- 1/2.9" CMOS
- 2MP (1920\*1080)@25fps
- H.264/H.265
- Face detection
- IR Range 30m
- Fixed Lens 3.6mm/6mm
- DWDR, 3D DNR, BLC, ROI
- PoE, metal case, IP67



### ES-852021/22C-S5/-MI

- 1/2.9" CMOS
- 2MP (1920\*1080)@25fps
- H.264/H.265
- Face detection
- Built-In Microphone
- IR Range 30m
- Fixed Lens 2.8mm/3.6mm
- DWDR, 3D DNR, BLC, ROI
- PoE, metal case, IP67



### BS-852022/23C-S5/-MI

- 1/2.9" CMOS
- 2MP (1920\*1080)@25fps
- H.264/H.265
- Face detection
- Built-In Microphone
- IR Range 30m
- Fixed Lens 3.6mm/6mm
- DWDR, 3D DNR, BLC, ROI
- PoE, metal case, IP67



### BL-852038S-S5

- 1/2.9" CMOS
- 2MP (1920\*1080)@25fps
- H.264/H.265
- Face detection
- IR Range 50m
- 3X zoom motorized lens
- DWDR, 3D DNR, BLC, ROI
- 1CH audio input
- PoE, metal case, IP67



### EL-852038I-S5

- 1/2.9" CMOS
- 2MP (1920\*1080)@25fps
- H.264/H.265
- Face detection
- IR Range 50m
- 3X zoom motorized lens
- DWDR, 3D DNR, BLC, ROI
- 1CH audio input
- PoE, metal case, IP67



### DL-852028B-S5

- 1/2.9" CMOS
- 2MP (1920\*1080)@25fps
- H.264/H.265
- Face detection
- IR Range 30m
- 3X zoom motorized lens
- DWDR, 3D DNR, BLC, ROI
- 1CH audio input
- PoE, metal case, IP67, IK10



### BS-855L22C-E3/23C-E3

- 1/2.8" Sony STARVIS CMOS
- 5MP (2560\*1920)@20fps
- H.264/H.265/H.265+
- Face detection
- IR Range 30m
- Fixed Lens 3.6/6mm
- PoE, metal case, IP67



### ES-855L21C-E3/22C-E3

- 1/2.8" Sony STARVIS CMOS
- 5MP (2560\*1920)@20fps
- H.264/H.265/H.265+
- Face detection
- IR Range 30m
- Fixed Lens 2.8/3.6mm
- PoE, metal+plastic, IP67



### BL-855L38S-E3

- 1/2.8" Sony STARVIS CMOS
- 5MP (2560\*1920)@20fps
- H.264/H.265/H.265+
- Face detection
- IR Range 50m
- Motorized 3.6-10.8mm
- 1CH audio input
- PoE, metal case, IP67



### EL-855L38I-E3

- 1/2.8" Sony STARVIS CMOS
- 5MP (2560\*1920)@20fps
- H.264/H.265/H.265+
- Face detection
- IR Range 50m
- Motorized 3.6-10.8mm
- 1CH audio input
- PoE, metal case, IP67



### DL-855L28B-E3

- 1/2.8" Sony STARVIS CMOS
- 5MP (2560\*1920)@20fps
- H.264/H.265/H.265+
- Face detection
- IR Range 30m
- Motorized 3.6-10.8mm
- 1CH audio input
- PoE, metal case, IP67, IK10



## Pro series IP Camera (2MP/4MP/5MP/8MP)

### BS-852T22/23C-S6/-MI

- 1/2.8" Sony STARVIS CMOS
- 2MP (1920\*1080)@25fps
- H.264/H.265/H.265+
- Face detection
- Built-In Microphone
- IR Range 30m
- Fixed Lens 3.6/6mm
- 120dB TWDR, 3D DNR, BLC, ROI
- PoE, metal case, IP67



### ES-852T21/22C-S6/-MI

- 1/2.8" Sony STARVIS CMOS
- 2MP (1920\*1080)@25fps
- H.264/H.265/H.265+
- Face detection
- Built-In Microphone
- IR Range 30m
- Fixed Lens 2.8/3.6mm
- 120dB TWDR, 3D DNR, BLC, ROI
- PoE, metal case, IP67



### BL-852T48S-S6

- 1/2.8" Sony STARVIS CMOS
- 2MP (1920\*1080)@25fps
- H.264/H.265/H.265+
- Face detection
- IR Range 80m
- 3X zoom motorized lens
- 120dB TWDR, 3D DNR, BLC, ROI
- 1CH Audio Input
- PoE, metal case, IP67



### EL-852T38I-S6

- 1/2.8" Sony STARVIS CMOS
- 2MP (1920\*1080)@25fps
- H.264/H.265
- Face detection
- IR Range 50m
- 3X zoom motorized lens
- 120dB TWDR, 3D DNR, BLC, ROI
- 1CH audio input
- PoE, metal case, IP67



### DL-852T28B-S6

- 1/2.8" Sony STARVIS CMOS
- 2MP (1920\*1080)@25fps
- H.264/H.265/H.265+
- Face detection
- IR Range 30m
- 3X zoom motorized lens
- 120dB TWDR, 3D DNR, BLC, ROI
- 1CH Audio Input
- Audio/Alarm/RS485/SD card slot
- PoE, metal case, IP67, IK10



### BL-852T48A-S6

- 1/2.8" Sony STARVIS CMOS
- 2MP (1920\*1080)@25fps
- H.264/H.265/H.265+
- Face detection
- IR Range 80m
- 3X zoom motorized lens
- 120dB TWDR, 3D DNR, BLC, ROI
- Audio/Alarm/RS485/SD card slot
- PoE, metal case, IP67



### BS-854N22C-E3/23C-E3

- 1/2.8" Sony STARVIS CMOS
- 4MP (2592\*1520)@25fps
- H.264/H.265/H.265+
- Face detection
- IR Range 30m
- Fixed Lens 3.6mm/6mm
- TWDR, 3D DNR, BLC, ROI
- PoE, metal case, IP67



### ES-854N21C-E3/22C-E3

- 1/2.8" Sony STARVIS CMOS
- 4MP (2592\*1520)@25fps
- H.264/H.265/H.265+
- Face detection
- IR Range 30m
- Fixed Lens 2.8mm/3.6mm
- TWDR, 3D DNR, BLC, ROI
- PoE, metal case, IP67



### BL-854N38A-E3

- 1/2.8" Sony STARVIS CMOS
- 4MP (2592\*1520)@25fps
- H.264/H.265/H.265+
- Face detection
- IR Range 50m
- Motorized 3.6-10.8mm
- TWDR, 3D DNR, BLC, ROI
- Audio/Alarm/RS485/SD card slot
- PoE, metal case, IP67



### EL-854N38I-E3

- 1/2.8" Sony STARVIS CMOS
- 4MP (2592\*1520)@25fps
- H.264/H.265/H.265+
- Face detection
- IR Range 50m
- Motorized 3.6-10.8mm
- TWDR, 3D DNR, BLC, ROI
- 1CH audio input
- PoE, metal case, IP67



### DL-854N28B-E3

- 1/2.8" Sony STARVIS CMOS
- 4MP (2592\*1520)@25fps
- H.264/H.265/H.265+
- Face detection
- IR Range 30m
- Motorized 3.6-10.8mm
- TWDR, 3D DNR, BLC, ROI
- Audio/Alarm/RS485/SD card slot
- PoE, metal case, IP67



### BS-855P22/23C-S7/-MI

- 1/2.8" CMOS
- 5MP (2592\*1994)@25fps
- H.264/H.265
- Face detection
- Built-In Microphone
- IR Range 30m
- Fixed Lens 3.6/6mm
- DWDR, 3D DNR, BLC, ROI
- PoE, metal case, IP67





## ES-855P21/22C-S7/-MI

- 1/2.8" CMOS
- 5MP (2592\*1994)@25fps
- H.264/H.265
- Face detection
- Built-in Microphone
- IR Range 30m
- Fixed Lens 2.8/3.6mm
- DWDR, 3D DNR, BLC, ROI
- PoE, metal case, IP67



## BL-855P48S-S7

- 1/2.8" CMOS
- 5MP (2592\*1994)@25fps
- H.264/H.265
- Face detection
- IR Range 80m
- Motorized 3.6-10.8mm lens
- DWDR, 3D DNR, BLC, ROI
- 1CH Audio Input
- PoE, metal case, IP67



## DL-855P28B-S7

- 1/2.8" CMOS
- 5MP (2592\*1994)@25fps
- H.264/H.265
- Face detection
- IR Range 30m
- Motorized 3.6-10.8mm lens
- DWDR, 3D DNR, BLC, ROI
- 1CH Audio Input
- Audio/Alarm/RS485/SD card slot
- PoE, metal case, IP67,IK10



## BL-855P48A-S7

- 1/2.8" CMOS
- 5MP (2592\*1994)@25fps
- H.264/H.265
- Face detection
- IR Range 80m
- Motorized 3.6-10.8mm lens
- DWDR, 3D DNR, BLC, ROI
- Audio/Alarm/RS485/SD card slot
- PoE, metal case, IP67



## BS-858M22/23C-S8

- 1/2.8" Sony CMOS
- 8MP (3840\*2160)@20fps
- H.264/H.265/H.265+
- Face Detection
- IR Range 30m
- Fixed Lens 3.6/6mm
- DWDR, 3D DNR, BLC, ROI
- PoE, metal case, IP67



## DL-858M22B-S8

- 1/2.8" Sony CMOS
- 8MP (3840\*2160)@20fps
- H.264/H.265/H.265+
- Face Detection
- IR Range 30m
- Fixed Lens 3.6mm
- DWDR, 3D DNR, BLC, ROI
- 1CH Audio Input
- PoE, metal case, IP67,IK10



## BL-858M48S-S8

- 1/1.8" Sony CMOS
- 8MP (3840\*2160)@20fps
- H.264/H.265/H.265+
- Face Detection
- IR Range 80m
- Motorized 3.6-11mm
- DWDR, 3D DNR, BLC, ROI
- 1CH Audio Input
- PoE, metal case, IP67,IK10



## DL-858M28B-S8

- 1/2.8" Sony CMOS
- 8MP (3840\*2160)@20fps
- H.264/H.265/H.265+
- Face Detection
- IR Range 30m
- Motorized 3.6-11mm
- DWDR, 3D DNR, BLC, ROI
- 1CH Audio Input
- Audio/Alarm/RS485/SD card slot
- PoE, metal case, IP67,IK10



## BL-858M48A-S8

- 1/2.8" Sony CMOS
- 8MP (3840\*2160)@20fps
- H.264/H.265/H.265+
- Face Detection
- IR Range 80m
- Motorized 3.6-11mm
- DWDR, 3D DNR, BLC, ROI
- Audio/Alarm/RS485/SD card slot
- PoE, metal case, IP67



## BioUltra Series IP Camera

### BL-852Q38A

- 1/2.8" Sony STARVIS CMOS
- 2MP (1920\*1080)@25fps
- H.264/H.265/H.265+
- Facial Recognition,3000 Face Library
- IR Range 50m
- 3X zoom motorized lens
- 120dB TWDR, 3D DNR, BLC, ROI
- Audio/Alarm/RS485/SD card slot
- PoE,metal case, IP67



### DL-852Q28B

- 1/2.8" Sony STARVIS CMOS
- 2MP (1920\*1080)@25fps
- H.264/H.265/H.265+
- Facial Recognition,3000 Face Library
- IR Range 30m
- 3X zoom motorized lens
- 120dB TWDR, 3D DNR, BLC, ROI
- PoE,metal case, IP67



### BL-852Q38A-LP

- 1/2.8" Sony STARVIS CMOS
- 2MP (1920\*1080)@25fps
- H.264/H.265/H.265+
- License Plate Recognition
- IR Range 50m
- 3X zoom motorized lens
- 120dB TWDR, 3D DNR, BLC, ROI
- Audio/Alarm/RS485/SD card slot
- PoE, metal case, IP67



### DL-852Q28B-LP

- 1/2.8" Sony STARVIS CMOS
- 2MP (1920\*1080)@25fps
- H.264/H.265/H.265+
- License Plate Recognition
- IR Range 30m
- 3X zoom motorized lens
- 120dB TWDR, 3D DNR, BLC, ROI
- Audio/Alarm/RS485/SD card slot
- PoE, metal case, IP67



### DL-858V17C-FS

- 1/1.7" Sony CMOS
- 8MP (3840\*2160)@(1-25/30fps)
- H.264/H.265
- IR Range 10-20m
- Starlight/120dB TWDR
- 360 degree panoramic
- Audio/Alarm/RS485/SD card slot/PoE
- Metal case, IP66



## Full Color IP Camera

### ES-852O11/12C-S5-C

- 1/2.9" CMOS
- 24 hours 2MP full color
- 2MP (1920\*1080)@25fps
- H.264/H.265
- Face Detection
- White light range 10-20m
- Fixed Lens 2.8/3.6mm
- DWDR, 3D DNR, BLC, ROI
- PoE, metal case, IP67



### BS-852O11/12C-S5-C

- 1/2.9" CMOS
- 24 hours 2MP full color
- 2MP (1920\*1080)@25fps
- H.264/H.265
- Face Detection
- White light range 10-20m
- Fixed Lens 2.8/3.6mm
- DWDR, 3D DNR, BLC, ROI
- PoE, metal case, IP67



### ES-855P11/12C-S7-C

- 1/2.8" CMOS
- 24 hours 5MP full color
- 5MP (2592\*1944)@25fps
- H.264/H.265
- Face Detection
- White light range 10-20m
- Fixed Lens 2.8/3.6mm
- DWDR, 3D DNR, BLC, ROI
- PoE, metal case, IP67



### BS-855P11/12C-S7-C

- 1/2.8" CMOS
- 24 hours 5MP full color
- 5MP (2592\*1944)@25fps
- H.264/H.265
- Face Detection
- White light range 10-20m
- Fixed Lens 2.8/3.6mm
- DWDR, 3D DNR, BLC, ROI
- PoE, metal case, IP67



# Human Detection IP PTZ

## PS-852D18/30L

- 2MP 1/2.9" CMOS sensor
- 18/30X optical Zoom
- IR Range 150m
- Pan speed 180°/s & Tilt speed 100°/s
- DWDR, BLC, 2D&3D noise reduction
- Built-In Microphone & Speaker
- Human detection linkage with sound speaker and auto tracking
- PoE, IP66



## PS-855C18/30L

- 5MP 1/2.9" CMOS sensor
- 18/30X optical Zoom
- IR Range 120m
- Pan speed 180°/s & Tilt speed 100°/s
- DWDR, BLC, 2D&3D noise reduction
- Built-In Microphone & Speaker
- Human detection linkage with sound speaker and auto tracking
- PoE, IP66



## PL-852D18/30M

- 2MP 1/2.9" CMOS sensor
- 18/30X optical Zoom
- IR Range 150m
- Pan speed 180°/s & Tilt speed 100°/s
- DWDR, BLC, 2D&3D noise reduction
- Built-In Microphone & Speaker
- Human detection linkage with sound speaker, strobe lights and auto tracking
- PoE, IP66



## PL-855C18/30M

- 5MP 1/2.9" CMOS sensor
- 18/30X optical Zoom
- IR Range 120m
- Pan speed 180°/s & Tilt speed 100°/s
- DWDR, BLC, 2D&3D noise reduction
- Built-In Microphone & Speaker
- Human detection linkage with sound speaker, strobe lights and auto tracking
- PoE, IP66



## KB200(IP Keyboard)

- ONVIF Profile S
- 5 Inch colorful LED display
- PnP, DHCP, TCP/IP protocol
- HDMI output



# H.265+ Non-POE NVR Series

## Z8504NER



- H.265+
- Max resolution: 4CH\*5MP@25/30fps
- HDMI 1080P Output
- Mini 1U Case, SATA x 1

## Z8508NER



- H.265+
- Max resolution: 8CH\*5MP@25/30fps
- HDMI 1080P Output
- Mini 1U Case, SATA x 1

## Z8516NER



- H.265+
- Max resolution: 16CH\*5MP@25/30fps
- HDMI 1080P Output
- Mini 1U Case, SATA x 1

## Z8516NFR



- H.265+
- Max resolution: 16CH\*8MP@25/30fps
- HDMI 4K Output
- 1U Case, SATA x 2

## Z8532NFR



- H.265+
- Max resolution: 32CH\*8MP@25/30fps
- HDMI 4K Output
- 1U Case, SATA x 2

## Z8536NMR



- H.265+
- Max resolution: 36CH\*8MP@25/30fps
- HDMI 4K Output
- 1.5U Case, SATA x 4

## Z8536NHR



- H.265+
- Max resolution: 36CH\*8MP@25/30fps
- HDMI 4K Output
- 2U Case, SATA x 9

## Z8564NHR



- H.265+
- Max resolution: 64CH\*8MP@25/30fps
- HDMI 4K Output
- 2U Case, SATA x 9

## Z85128NTR



- H.265+
- Max resolution: 128CH\*8MP@25/30fps
- HDMI 4K Output
- 3U Case, SATA x 16

# H.265+ POE NVR Series

## Z8504NER-4P



- H.265+
- 4 channel IP Input, 4 PoE Port
- Max resolution: 4CH\*5MP@25/30fps
- HDMI 1080P Output
- Mini 1U Case, SATA x 1

## Z8508NER-8P



- H.265+
- 8 channel IP Input, 8 PoE Port
- Max resolution: 8CH\*5MP@25/30fps
- HDMI 1080P Output
- Mini 1U Case, SATA x 1

## Z8516NFR-16P



- H.265+
- 16 channel IP Input, 16 PoE Port
- Max resolution: 16CH\*8MP@25/30fps
- HDMI 4K Output
- 1U Case, SATA x 2

## Z8532NFR-16P



- H.265+
- 32 channel IP Input, 16 PoE Port
- Max resolution: 32CH\*8MP@25/30fps
- HDMI 4K Output
- 1U Case, SATA x 2

# BioFace Lite Face Recognition NVR Series

## Z8608NF-8F



- H.265+
- 8MP@25/30fps
- 8ch Face recognition decoding
- 50,000pcs Face Templates
- 25 faces-sec Match Speed
- 1U Case, SATA x 2

## Z8636NF-16F



- H.265+
- 8MP@25/30fps
- 16ch Face recognition + 20ch Regular decoding
- 100,000pcs Face Templates
- 50 faces-sec Match Speed
- 1U Case, SATA x 2

## Z8536NMR-4F



- H.265+
- 8MP@25/30fps
- 4ch Face recognition + 32ch Regular decoding
- 5,000pcs Face Templates
- 3-4 faces-sec Match Speed
- 1.5U Case, SATA x 4

# IOT and USB product series

## NG-V400



- 4ch Wi-Fi NVR, 1SATA
- 4\* 2MP Wi-Fi IP camera, H.265
- 3.6mm lens
- IR distance 20m
- Wi-Fi connection, plug-n-play
- Human body detection
- Suitable for the outdoors (IP66 for IP cameras)

## NG-V800



- 8ch Wi-Fi NVR, 1SATA
- 8\* 2MP Wi-Fi IP camera, H.265
- 3.6mm lens
- IR distance 20m
- Wi-Fi connection, plug-n-play
- Human body detection
- Suitable for the outdoors (IP66 for IP cameras)

## UV100



(Special Model)

- USB Camera
- 1080P (1920x1080@30fps) HD camera
- USB2.0 connectivity, for a fast, easy connection
- General UVC protocol, drive-free Installation
- Built-In MIC, support Audio & Video recording
- Support 360° rotation, tripod, plastic casing

## NG-C4100

- 1/2.7" CMOS Sensor
- 3MP (2304\*1296)@16fps
- H.265 / H.264
- Motion/Human Detection
- 3.6 mm lens
- IR Light Distance 5-20m  
White Light Distance 5-20m
- 340° horizontal and 90° vertical
- Built-In Mic & Speaker
- Cloud Storage/TF Card Slot/Echo show & Google assistant optional



## NG-C2200

- 1/3" CMOS Sensor
- 2MP (1920\*1080)@20fps
- H.264
- Motion/Human Detection
- 4 mm lens
- IR Distance 10m
- 345° horizontal and 85° vertical
- Built-In Mic & Speaker
- Cloud Storage/TF Card Slot/Echo show & Google assistant optional



# 1080P HD Analog Cameras

## ES-32B11J



- 1080P 1/2.9" CMOS
- IR Range: 20m
- AHD/TVI/CVI/CVBS Video Output
- DWDR
- Fixed Lens 2.8mm

## BS-32B11A



- 1080P 1/2.9" CMOS
- IR Range: 20m
- AHD/TVI/CVI/CVBS Video Output
- DWDR
- Fixed Lens 2.8mm

## ES-32B11C



- 1080P 1/2.9" CMOS
- IR Range: 20m
- AHD/TVI/CVI/CVBS Video Output
- DWDR
- Fixed Lens 2.8mm

## BS-32B21C



- 1080P 1/2.9" CMOS
- IR Range: 30m
- AHD/TVI/CVI/CVBS Video Output
- DWDR
- Fixed Lens 2.8mm

## ES-32G11/12C-MI



- 1080P 1/2.9" CMOS
- IR Range: 20m
- DWDR
- Fixed Lens 2.8/3.6mm
- Built-in audio
- AHD/TVI/CVI/CVBS Video Output
- IP67

## BS-32G22/23C-MI



- 1080P 1/2.9" CMOS
- IR Range: 30m
- DWDR
- Fixed Lens 3.6/6mm
- Built-in audio
- AHD/TVI/CVI/CVBS Video Output
- IP67

## ES-32D11/12C



- 1080P 1/2.9" CMOS
- IR Range: 20m
- DWDR
- Fixed Lens 2.8/3.6mm
- AHD/TVI/CVI/CVBS Video Output

## BS-32D22/23C



- 1080P 1/2.9" CMOS
- IR Range: 30m
- DWDR
- Fixed Lens 3.6/6mm
- AHD/TVI/CVI/CVBS Video Output

### BL-32G33S-MI

- 1080P 1/2.9" CMOS
- IR Range: 50m
- DWDR
- Fixed Lens 6mm
- Built-in audio
- AHD/TVI/CVI/CVBS Video Output
- IP67



### BL-32G44S-MI

- 1080P 1/2.9" CMOS
- IR Range: 80m
- DWDR
- Fixed Lens 8mm
- Built-in audio
- AHD/TVI/CVI/CVBS Video Output
- IP67



### BL-32G38S-MI

- 1080P 1/2.9" CMOS
- IR Range: 50m
- DWDR
- Motorized 3.35-10.05 mm
- Built-in audio
- AHD/TVI/CVI/CVBS Video Output
- IP67



### DL-32G28B-MI

- 1080P 1/2.9" CMOS
- IR Range: 30m
- DWDR
- Motorized 3.35-10.05 mm
- Built-in audio
- AHD/TVI/CVI/CVBS Video Output
- IP67, IK10



## 5MP HD Analog Cameras

### ES-35H11/12C-MI

- 5MP 1/2.5" CMOS
- IR Range: 20m
- DWDR
- Fixed Lens 2.8/3.6mm
- Built-in audio
- AHD/TVI/CVI/CVBS Video Output



### BS-35H22/23C-MI

- 5MP 1/2.5" CMOS
- IR Range: 30m
- DWDR
- Fixed Lens 3.6/6mm
- Built-in audio
- AHD/TVI/CVI/CVBS Video Output



### BL-35H33S-MI

- 5MP 1/2.5" CMOS
- IR Range: 50m
- DWDR
- Fixed Lens 6mm
- Built-in audio
- AHD/TVI/CVI/CVBS Video Output
- IP67



### BL-35H44S-MI

- 5MP 1/2.5" CMOS
- IR Range: 80m
- DWDR
- Fixed Lens 8mm
- Built-in audio
- AHD/TVI/CVI/CVBS Video Output
- IP67



### BL-35I38S-MI

- 5MP 1/2.8" CMOS
- IR Range: 50m
- DWDR
- Motorized 3.35-10.05 mm
- Built-in audio
- AHD/TVI/CVI/CVBS Video Output
- IP67



### DL-35I28B-MI

- 5MP 1/2.8" CMOS
- IR Range: 30m
- DWDR
- Motorized 3.35-10.05 mm
- Built-in audio
- AHD/TVI/CVI/CVBS Video Output
- IP67, IK10



## 2MP/5MP Full Color AHD Camera

### ES-32E11/12C-C

- 2MP Full Color, 1/2.8" CMOS
- White light range: 10-20m
- DWDR
- Fixed Lens 2.8/3.6mm
- AHD/TVI/CVI/CVBS Video Output



### BS-32E11/12C-C

- 2MP Full Color, 1/2.8" CMOS
- White light range: 10-20m
- DWDR
- Fixed Lens 2.8/3.6mm
- AHD/TVI/CVI/CVBS Video Output



### ES-35J11/12C-C

- 5MP Full Color, 1/2.7" CMOS
- White light range: 10-20m
- DWDR
- Fixed Lens 2.8/3.6mm
- AHD/TVI/CVI/CVBS Video Output



### BS-35J11/12C-C

- 5MP Full Color, 1/2.7" CMOS
- White light range: 10-20m
- DWDR
- Fixed Lens 2.8/3.6mm
- AHD/TVI/CVI/CVBS Video Output



## 1080P/5MP HD Analogue PTZ

### PS-32A10B

- 2MP 1/2.9" CMOS
- 10X Optical Zoom
- Pan speed 0.1-300°/s & Tilt speed 0.1- 200°/s



### PS-32C18J

- 2MP 1/2.9" CMOS
- 18X Optical Zoom
- IR Range: 120m
- Pan speed 0.1-200°/s & Tilt speed 0.1- 200°/s
- IP66



### PS-35C18J

- 5MP 1/2.7" CMOS
- 18X Optical Zoom
- IR Range: 120m
- Pan speed 0.1-200°/s & Tilt speed 0.1- 200°/s
- IP66



### PL-32C20D

- 2MP 1/2.9" CMOS
- 20X Optical Zoom
- IR Range: 120m
- Pan speed 0.1-200°/s & Tilt speed 0.1- 180°/s
- IP66



### PL-32C33D

- 2MP 1/2.9" CMOS
- 33X Optical Zoom
- IR Range: 120m
- Pan speed 0.1-200°/s & Tilt speed 0.1- 180°/s
- IP66



### PL-35C20D

- 5MP 1/2.7" CMOS
- 20X Optical Zoom
- IR Range: 120m
- Pan speed 0.1-200°/s & Tilt speed 0.1- 180°/s
- IP66



### PL-35C33D

- 5MP 1/2.7" CMOS
- 33X Optical Zoom
- IR Range: 120m
- Pan speed 0.1-200°/s & Tilt speed 0.1- 180°/s
- IP66



### KB100

- RS485 & RS422 Interfaces
- Support PELCO D/P Protocols
- Each keyboard can control 32 cameras
- 3D Joystick controller, support setting Preset, Cruise, P/T/Z etc.





# All in one H.265 XVR

## H.265 5MP Lite XVR Series

### Z8404XEC-CL

- 4CH 5MP Lite@12fps
- AHD/TVI/CVI/CVBS Input
- Mini 1U Case, SATA x 1
- HDMI 1080P Output



### Z8408XEC-CL

- 8CH 5MP Lite@12fps
- AHD/TVI/CVI/CVBS Input
- Mini 1U Case, SATA x 1
- HDMI 1080P Output



### Z8404XE-CL

- 4CH 5MP Lite@12fps
- AHD/TVI/CVI/CVBS Input
- Mini 1U Case, SATA x 1
- HDMI 4K Output



### Z8408XE-CL

- 8CH 5MP Lite@12fps
- AHD/TVI/CVI/CVBS Input
- Mini 1U Case, SATA x 1
- HDMI 4K Output



## LED Monitor

### ZD22-2K

- 21.5"1080p LED FHD Monitor
- Brightness: 450 cd/m2
- Contrast: 3000:1
- Response Time: 5ms
- Color: 16.7M
- Video Inputs: 1\*HDMI, 1\*VGA



### ZD32-4K

- 32"4K LED UHD Monitor
- Brightness: 500 cd/m2
- Contrast: 3000:1
- Response Time: 5ms
- Color: 16.7M
- Video Inputs: 1\*HDMI, 1\*VGA\*, 1\*DVI, 1\*BNC



### ZD43-4K

- 43"4K LED UHD Monitor
- Brightness: 700 cd/m2
- Contrast: 3000:1
- Response Time: 5ms
- Color: 16.7M
- Video Inputs: 2\*HDMI, 1\*VGA\*, 1\*DVI, 2\*BNC



### ZD50-4K

- 50"4K LED UHD Monitor
- Brightness: 750 cd/m2
- Contrast: 3000:1
- Response Time: 5ms
- Color: 16.7M
- Video Inputs: 2\*HDMI, 1\*VGA\*, 1\*DVI, 2\*BNC



## Transmission

### POE Switch

#### PE04-60



- 4\*10/100Mbps RJ45 Ports(support POE)
- 2\*10/100Mbps Uplink Ports
- Max PoE power output 30W for each port
- IEEE 802.3af, IEEE802.3at POE Standards

#### PE08-120



- 8\*10/100Mbps RJ45 Ports(support POE)
- 2\*10/100Mbps Uplink Ports
- Max PoE power output 30W for each port
- IEEE 802.3af, IEEE802.3at POE Standards

#### PE16-180



- 16\*10/100Mbps RJ45 Ports(support POE)
- 2\*10/100/1000M Uplink Gigabit Combo Ports
- Power supply: 250w totally, each POE port max 30w
- Long-distance PoE Transmits 250 meters

#### PE24-240



- 24\*10/100Mbps RJ45 Ports(support POE)
- 2\*10/100/1000M Uplink Gigabit Combo Ports
- Power supply: 400w totally, each POE port max 30w
- Long-distance PoE Transmits 250 meters



## Lens

### DV3.9x11SR4A-SA1L

- Fujinon C lens, 11-43mm, F1.5, 1/1.8"
- 8MP, Manual Zoom&Focus, Auto Iris



### CS-D0550IR(6MP)

- CS lens, 5-50mm, F1.4, 1/2.7"
- 6MP, Manual Zoom&Focus, Auto Iris



### YT3011-3MP

- CS lens, 3.6-11mm, F1.5, 1/1.8"
- 3MP, Manual Zoom&Focus, Auto Iris



## Bracket for IP PTZ Cameras

### ZJ006

- Corner mount
- 180mm\*131mm\*127.25(L\*W\*H), weight:2.3KG
- For Human detection PTZ



### ZJ007

- Pole mount
- 180mm\*138.8mm\*41.5mm(L\*W\*H), weight:1KG
- For Human detection PTZ



### PB06

- Pendant bracket
- length 200\*89.5\*110.5mm, top Ø46.7mm, weight:0.52KG
- For 6 inch IP PTZ



## Bracket for Analogue PTZ Cameras

### PB04

- Pendant bracket
- L: 135mm, D: 128mm, weight: 0.52Kg
- For analog PTZ cases: PS-J



### PB05

- Pendant bracket
- L: 254mm, D: 121mm, weight: 0.76Kg
- For analog PTZ cases: PL-D



### MT05

- Pole mount
- L\*W: 195\*125(mm), weight: 1.08Kg
- For analog PTZ cases: PL-D



### MT06

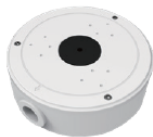
- Corner mount
- L\*W: 240\*143(mm), weight:1.7Kg
- For analog PTZ cases: PL-D



## Bracket and Junction box for normal cameras

### GB01

- Waterproof Junction box
- 135mm\*45.5mm(Ø\*H), weight 0.45kgs
- For casing: BS-K, BS-B, ES-H, BL-L, EH-I, BS-C, ES-C, BL-S



### MT03

- Corner mount
- L\*W\*H:150mm\*150mm\*128mm(L\*W\*H), weight:1KG
- For casing: BS -C, ES-C, BL-S, BL-L, EL-I, BS-B, ES-B, GB01



### MT04

- Pole mount
- L\*W\*H:150mm\*150mm\*50mm(L\*W\*H), weight:0.8KG
- For casing: BS -C, ES-C, BL-S, BL-L, EL-I, BS-B, ES-B, GB01



## AntarVis 2.0 (VMS)



- Up to 320 channels input
- User-friendly modular design GUI
- Support 64 channels preview synchronously each layout
- Support up to 1/4/9 channels playback synchronously
- Support 3D positioning and Fisheye camera
- Support smart search and e-Map
- Support decoder/TV wall and group management



## AntarView Pro

- Intuitive operation, friendly GUI
- Support 1/4/9/16 channels preview synchronously
- Support QR code scanning to add devices via P2P
- Support local and remote playback for images and video
- Support alarm push function
- Support Android and IOS version
- Support Face Registration



## ZKBioAccess IVS

- Supports 64 channels video preview and up to 4 channel playback at the same time
- Support query personnel by image content, schedule record, event record etc
- Supports facial recognition NVR, black and white list management, real-time check the capture comparison results
- Supports decoder polling as planned, decoder playback, TV wall splicing function
- Supports multiple alarm types, such as motion detection, line crossing, intrusion, target counting, object left/lost, video tampering

